

# HP WebInspect

Data sheet

## Accelerate security initiatives by providing more actionable information through expert security automation

### The leader in Web application security assessment

HP WebInspect is the industry leading Web application security assessment solution designed to thoroughly analyze today's complex Web applications. It delivers broad technology coverage, fast scanning capabilities, extensive vulnerability knowledge, and accurate Web application scanning results. HP WebInspect easily tackles today's most complex Web application technologies—including JavaScript, Adobe® Flash, Ajax and SOAP, utilizing HP's breakthrough testing innovations, for fast and accurate application security tests. HP WebInspect's extensive security intelligence and expert automation allows for areas of an organization new to application security to leverage the extensive intelligence of highly trained security professionals. Powered by the HP Web Security Research Group and HP SmartUpdate, HP WebInspect helps you test for the latest vulnerabilities in current Web technologies so that you can find security problems in your applications before the hackers do.

### Enable broader lifecycle adoption through security automation

HP WebInspect is easy-to-use, extensible, and accurate Web application security assessment software. HP WebInspect gives security professionals and security novices the power and knowledge to easily identify and remediate critical, high-risk security vulnerabilities in Web applications and Web services.

#### **Increase modern Web technology coverage**

Most application scanners are designed for simple Web technologies and lack the intelligence required to scan the complexities of today's interactive, Web 2.0 applications. HP WebInspect leads the way in intelligent scanning, allowing you to assess your entire application, no matter the architecture.

Innovations of HP WebInspect include:

- **JavaScript/Ajax:** Heavy client-side JavaScript applications have changed the game when it comes to application security assessment. HP WebInspect's superior technology will trace and record code paths through the JavaScript, fully analyzing how the application changes from the user's perspective as well as watch the Ajax requests and then make attacks to the server-side application accordingly to reveal vulnerabilities.
- **Adobe Flash:** In an industry first, HP WebInspect addresses security vulnerabilities that exist within applications using Adobe Flash technologies. HP WebInspect will find Adobe Shockwave Flash (SWF) files, decompile them, and then perform static analysis on the resulting code, detecting vulnerabilities such as insecure programming practices, insecure application deployment, Adobe "best practices" violations, and information disclosures.

#### **Accelerate security through more actionable information**

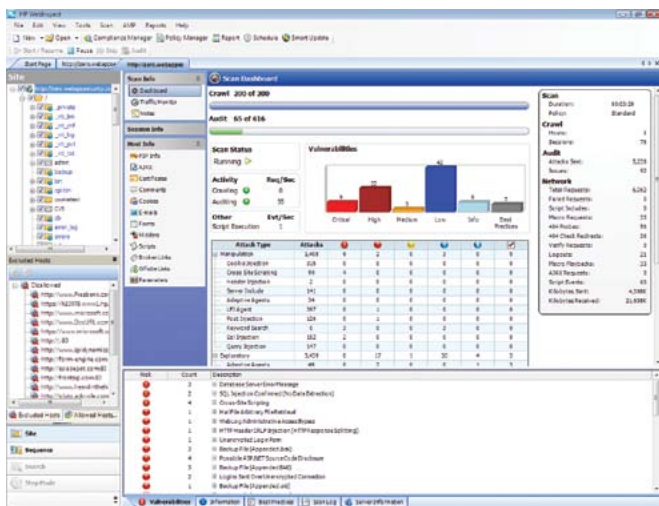
HP WebInspect brings the intellect and knowledge of a highly skilled security professional to your organization, enabling your teams to accurately assess your organization's Web applications for security vulnerabilities. With HP WebInspect's intuitive wizard interface, even the security novice can quickly execute a fully automated Web application assessment.

HP WebInspect doesn't just discover security vulnerabilities quickly and accurately, it also delivers the security knowledge needed to fix and remediate the issues. Through cooperation with Fortify, an HP company, and the HP Web Security Research Group, HP WebInspect's first-class knowledge base provides comprehensive details about the vulnerability detected, the implications of that vulnerability if it were to be exploited, as well as best-practices and coding examples necessary to quickly pinpoint and fix the issue.



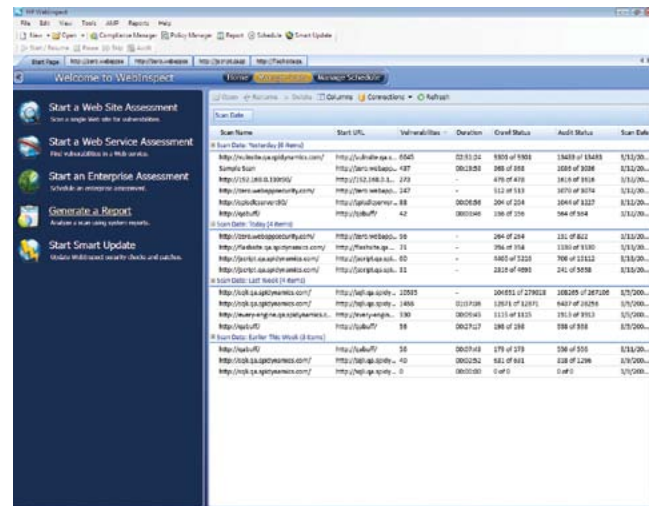
## Webinspect Scan Dashboard

Dashboard delivers real-time command and control with scan results visualization



## Webinspect Scan Database

Easily manage and view your scan results and history



### Elevate security knowledge across the business

HP WebInspect has the most powerful reporting system available, delivering a fast, flexible, and scalable instrument for communicating meaningful results from your application security assessment. In addition to the many standard report templates, HP WebInspect's simple report designer allows you to develop and generate fully customized reports that deliver the relevant knowledge to key stakeholders in a professional and polished format. HP WebInspect can also include data from external sources, providing full enterprise-grade reporting.

HP WebInspect integrates out-of-the box into the industry leading HP Quality Center software, allowing you to easily combine with your existing defect remediation processes and provide the detailed knowledge your developers need to quickly fix vulnerabilities.

### Comply with legal, regulatory, and architectural requirements

Along with the increase in Web application attacks there are now many additional legal, regulatory, and best practice requirements related to application security. HP WebInspect gives you the capabilities to easily address these additional requirements in a cost efficient manner. HP WebInspect includes detailed reports that show how your Web applications meet regulations and standards, as well as what changes are required for compliance. In addition, users can create new policies or customize existing ones. The sophisticated reporting system allows you to easily create, modify, or enhance the information reported. HP WebInspect includes pre-configured policies for every major law, regulation, and best practices including the Payment Card Industry Data Security Standard (PCI DSS), OWASP Top 10, ISO 17799, ISO 27001, Health Insurance Portability and Accountability Act (HIPAA), and many more.

### Leverage automation to do more with less

Every organization is faced with the challenges of doing more with less. HP WebInspect delivers the ability to drive significant results in the most efficient way. HP customers report a 60% decrease in application security research costs, a 56% improvement in application security assessment activities as well as a 36% reduction in the total cost of audit and compliance.<sup>1</sup> With the combination of the intuitive usability, intelligent scanning engines, first-class knowledge base, concurrent scan execution, live scan results, a tabbed workspace, and superior reporting, HP WebInspect helps you maximize the use of your valuable time, lower the cost of security vulnerability assessment and remediation, while reducing the risk of your Web applications to your business.

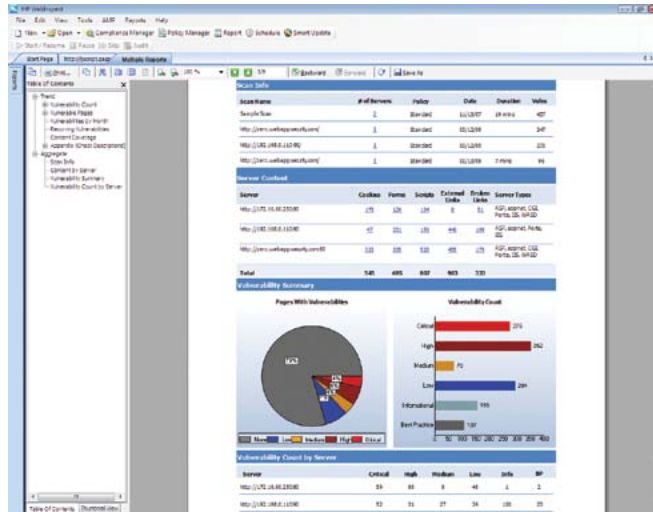
### Build an enterprise-wide application security program

HP WebInspect integrates with HP Assessment Management Platform software for enterprise-wide, distributed assessment capabilities. HP Assessment Management Platform provides a scalable platform to assess Web applications across your entire enterprise and an organization-wide view of application security giving you the knowledge to make informed business decisions. HP Assessment Management Platform also allows you to easily add and integrate other solutions across the entire application lifecycle, including Fortify and HP QALInspect, as well as with other key management systems and security sources, so your business can build a mature application security program.

<sup>1</sup> Quantifying the value of investments in Application Security, ROI Whitepaper, Hewlett Packard, February 2009

## WebInspect Trend Reporting:

View and analyze vulnerability trends over time to track application security progress and efficiency



### Engage the HP Web Security Research Group

All HP Application Security Center Software is informed by the expertise and responsiveness of the HP Web Security Research Group. The HP Web Security Research Group is a team made up of leading security researchers dedicated to being at the forefront of Web application vulnerability discovery and innovation. This team's extensive research not only provides the latest innovations in Web application vulnerability assessment but also generates regular and timely updates to all products via HP SmartUpdate, augmenting your team with advanced security knowledge and superior timeliness.

### Key features and benefits

#### Innovative assessment technology

- Advanced client-side scripting technology to statically analyze JavaScript, Flash, and others
- Produce faster scans and more accurate results through the Simultaneous Crawl and Audit (SCA) technology
- Improve accuracy and precision using scan technology built specifically for today's complex applications
- Reduce false positives using Intelligent Engines designed to imitate a hacker's methodology
- Scan more applications with less effort through support for multiple concurrent scans
- Innovative scan profiler assists you in tuning the scan configuration to improve the effectiveness and accuracy of the scan
- List-driven assessments for targeted and efficient application scanning
- Optimizations for depth-first crawling option for websites that enforce order-dependent navigation

- Fingerprinting of Web framework using Smart Assessment technology to reduce unnecessary attacks

#### Refined and Simple Usability

- Quickly initiate simple or regression scans with minimal configuration for immediate results
- Walk through a wizard to setup a scan, or jump right in with "Scan Now" option
- View scan results within seconds of starting an assessment
- Review and control multiple simultaneous scans and reports through a tabbed interface
- Submit false positive reports and other feedback directly and securely to HP in just a couple clicks
- Create reusable, componentized macros to record testing steps and login procedures
- Develop custom attacks and policies quickly and easily using the custom check wizard

#### Actionable remediation and compliance reports

- Run compliance reports for all major regulatory standards, including PCI, SOX, ISO, and HIPAA
- Create flexible, extensible, and scalable reports that match your business
- Simplify repetitive report generation through report templates
- Customize fonts, colors, and backgrounds with the style editor allowing you to generate scan reports with a professional, polished appearance
- Tailor reports for the reader to focus on issues that matter most to them
- Assess application security trends and readiness

#### HP Webspect checks for: Data injection and manipulation attacks

- Reflected cross-site scripting (XSS)
- Persistent XSS
- Cross-site request forgery
- SQL injection
- Blind SQL injection
- Buffer overflows
- Integer overflows
- Log injection
- Remote File Include (RFI) injection
- Server Side Include (SSI) injection
- Operating system command injection
- Local File Include (LFI)
- Parameter Redirection
- Auditing of Redirect Chains

#### Sessions and authentication

- Session strength
- Authentication attacks
- Insufficient authentication
- Insufficient session expiration

#### Server and general HTTP

- Ajax auditing
- Flash Analysis
- HTTP Header Auditing
- Detection of Client-side Technologies
- Secure Sockets Layer (SSL) certificate issues
- SSL protocols supported
- SSL ciphers supported
- Server misconfiguration
- Directory indexing and enumeration
- Denial of service
- HTTP response splitting
- Windows® 8.3 file name
- DOS device handle DoS
- Canonicalization attacks
- URL redirection attacks
- Password auto complete
- Cookie security
- Custom fuzzing
- Path manipulation—traversal
- Path truncation
- WebDAV auditing
- Web services auditing
- File enumeration
- Information disclosure
- Directory and path traversal
- Spam gateway detection
- Brute force authentication attacks
- Known application and platform vulnerabilities

#### Key integrations

- Integrate into your defect management processes with out-of-the-box integrations with HP Quality Center
- Integrate into your enterprise application security management process with an out-of-the-box integration with HP Assessment Management Platform software
- Extensive data export via XML for open integration with other security management systems
- Include information from external data sources in your reports via ODBC, SQL, or XML connections

#### Advanced tools for penetration testers (HP Security Toolkit)

- **Report Designer:** allows you to create new reports or customize the ones from HP, combine external data sources, edit the style, and create custom user input
- **SQL injector:** extract entire databases by using SQL injection vulnerabilities
- **Cookie cruncher:** analyze the strength of cookies to avoid session hijacking
- **Encoder:** translate different encryption and encoding standards
- **HTTP editor:** create and edit raw HTTP requests
- **Regex editor:** test and build regular expressions
- **SOAP editor:** generate and edit raw Web services requests
- **Web Fuzzer:** identify buffer overflows using HTTP fuzzing or modify input variables
- **Web Proxy:** view every request and server response while browsing a site
- **WebBrute:** test the strength of login forms or Web and proxy authentication systems
- **WebDiscovery:** identify and discover which Web servers and Web applications are behind which ports
- **Server analyzer:** identify a Web server or device and perform deep SSL analysis
- **Traffic monitor:** monitor every HTTP request and response sent during the crawl and audit

## About HP BTO Application Solutions

HP's application solutions help ensure modernization initiatives deliver business outcome instead of failing under the burden of outdated, legacy delivery mechanisms. Where rival solutions mistake the software development lifecycle for a total picture of the application, HP sees core delivery in the context of the complete application lifecycle—from business idea through retirement. Furthermore, by providing unified management and automation solutions, HP offers customers not simply more tools and integrations but greater simplicity. The result for enterprise application teams is improved predictability, repeatability, quality, and change readiness in both the core and complete lifecycle.

Accelerate security through more actionable information; visit:  
[www.hp.com/go/securitysoftware](http://www.hp.com/go/securitysoftware)

Connect with peers and HP Software experts; visit:  
[www.hp.com/go/swcommunity](http://www.hp.com/go/swcommunity)

Share with colleagues



### Get connected

[www.hp.com/go/getconnected](http://www.hp.com/go/getconnected)

Current HP driver, support, and security alerts delivered directly to your desktop

© Copyright 2007, 2009–2010 Hewlett-Packard Development Company, L.P. The information contained herein is subject to change without notice. The only warranties for HP products and services are set forth in the express warranty statements accompanying such products and services. Nothing herein should be construed as constituting an additional warranty. HP shall not be liable for technical or editorial errors or omissions contained herein.

Adobe is a trademark of Adobe Systems Incorporated. Windows is a U.S. registered trademark of Microsoft Corporation.

4AA1-5363ENW, Created September 2007; Updated October 2010, Rev. 2

